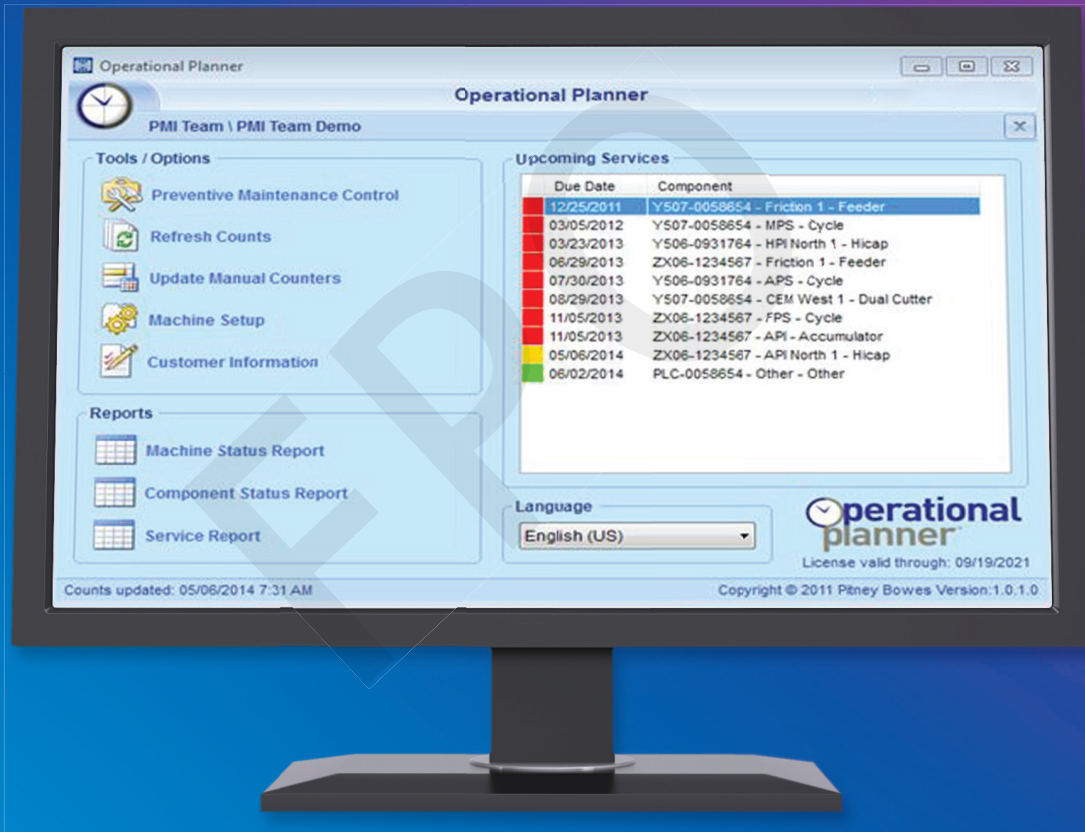


Periodic Maintenance Optimization (PMO) service

Optimizing machine productivity and performance
through intelligent planning

Periodic maintenance optimization



The operational planner provides an easy to read dashboard with color-coded forecasts.

What is important to you?

Some questions to consider:

- Are you concerned about how much time maintenance procedures might take and how that will impact your production and SLA commitments?
- Would using machine data to determine the needs and best times for maintenance based on your historical production cycles and job applications be valuable?
- Do you use performance metrics for your machines to determine utilization and run time?
- If a machine malfunctions due to a worn or unmaintained part, how does that impact your production and business profitability?
- Do you need the flexibility to purchase a maintenance service a la carte based on increased volumes and machine stressors?

Periodic maintenance optimization is the planned and optimized care and servicing of your equipment by trained personnel for the purpose of maintaining consistent machine performance. Our clients appreciate that planned service minimizes disruptive repairs and downtime.

To ensure maximum uptime and performance, your expert Pitney Bowes service representative uses a defined, systematic inspection, detection, and correction approach to identify and remedy potential equipment issues.

What is included?

Periodic maintenance optimization takes standard maintenance to the next level of performance. This service helps increase your utilization and productivity by:

- Delivering intelligent servicing through the Pitney Bowes operational planner to determine when and to what extent maintenance should be performed, to keep your operation up and running optimally.
- Optimizing run time by proactively monitoring machine maintenance needs down to the component level.
- Including periodic maintenance parts and the option to add additional maintenance service a la carte if your volumes increase
- Providing confidence that your machines will be running optimally during mission-critical jobs and tight deadlines.

Operational planner and health check

The operational planner software application and monthly health check program are included with your periodic maintenance service purchase.

The operational planner:

- Monitors individual throughputs across each machine
- Predicts accurately future services for whole machines, machine sections, and down to the individual component level
- Helps you visualize and track routine maintenance needs through a color-coded dashboard
- Saves on excessive parts usage and can increase run time through the reduction of over- and under-servicing of the machine
- Provides tracking across a single or multiple machines
- Offers multi-language support and changing languages is quick and easy

The health check involves a periodic systemic visual inspection and detection of wear and tear, including a review and analysis of the top five machine stoppages (if software allows) to help pre-empt and correct any potential issues.

The health check includes:

- Interview of your operator
- Inspection of the machine log
- Visual and auditory inspection and checklist review

How do you benefit?

We believe our periodic maintenance optimization service should make a difference in how your business functions by:

- Giving you confidence that your equipment is in optimal condition, especially prior to running large volumes or mission-critical jobs.
- Enhancing the capacity and utilization of your machines through maintenance best practices.
- Ensuring that you get the best performance and production from your machines, increasing your return on investment and reducing your total cost of ownership.