



Shipping & Mailing  
Inserting

Relay™ 1000 inserter

# The easy way to automate mail folding and inserting.





### **Quickly fold, stuff and seal your envelopes.**

Sending invoices, statements, letters and promotions is critical to your business. However, folding paper and stuffing envelopes by hand is an unnecessary waste of time and resources. For consistent, accurate, and dependable results, look to the Relay™ 1000 inserting system.

### **Don't just meet your goals. Exceed them.**

A compact system designed to take the labor out of your hands, the Relay 1000 inserting system helps maximize your time and space wisely. That allows you to focus on what you do best. By automating your mailings, you'll be able to spend your time building your business and delivering value to your customers.

### **With the Relay 1000, you can:**

- Correspond with customers more regularly.
- Add revenue-generating inserts.
- Improve the security of your mail with envelopes that stay sealed.
- Align mailing addresses for a precise fit in envelope windows, to help get your mail to its destination.
- Deliver frequent promotional mailings.

# Relay™ 1000 features



## Envelope feeder

60 envelope capacity also lets you load material on the fly for continuous operation.



## Control panel

The simple interface makes job selection easy. Just press and go.



## Convenience feeder

Give everyday mail a professional look by feeding up to 3-pages stapled or unstapled.



## Sheet feeders

Load up to 80 sheets. A sheet feeder is included. A second sheet feeder is an available option.



## Insert feeder

Add impact to your mail piece with a pre-folded brochure, notice or reply envelope.

# Drive higher performance with the Relay™ 1000 inserting system.

**Productivity:** Automating mail folding and inserting saves time.

**Accuracy:** Eliminate costly delays in mailing due to manual errors.

**Out of the box operation:** Plug it in, load your materials and you're ready to produce.

**Flexible processing:** Invoices, statements, letters, promotions and other correspondence are folded, inserted and securely sealed in envelopes, ready for mailing.

**Versatile:** Automatically fold and insert up to two letter or legal sized sheets into a #10 envelope.

**Drive sales:** Add a promotional insert or reply envelope to your communications to help grow your business.

**Save time and reduce the need for manual labor:** Our system processes 15 pieces per minute and is six times faster than manual processing.

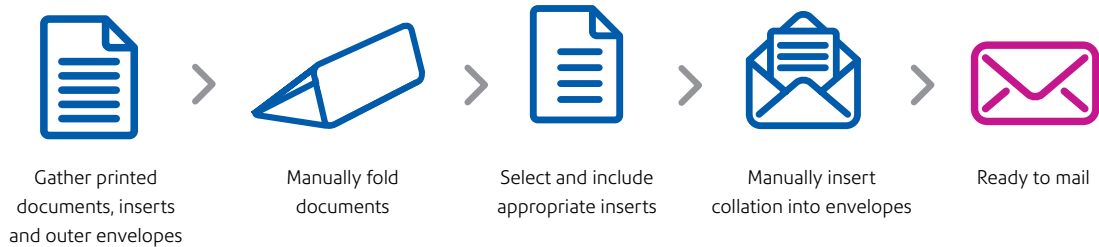
**Speed cash flow:** Invoices get out faster. That means that your payments come back to you sooner.

**Easy to use:** All the controls are right at your fingertips with prompts in English or French—clearly displayed on the control panel.

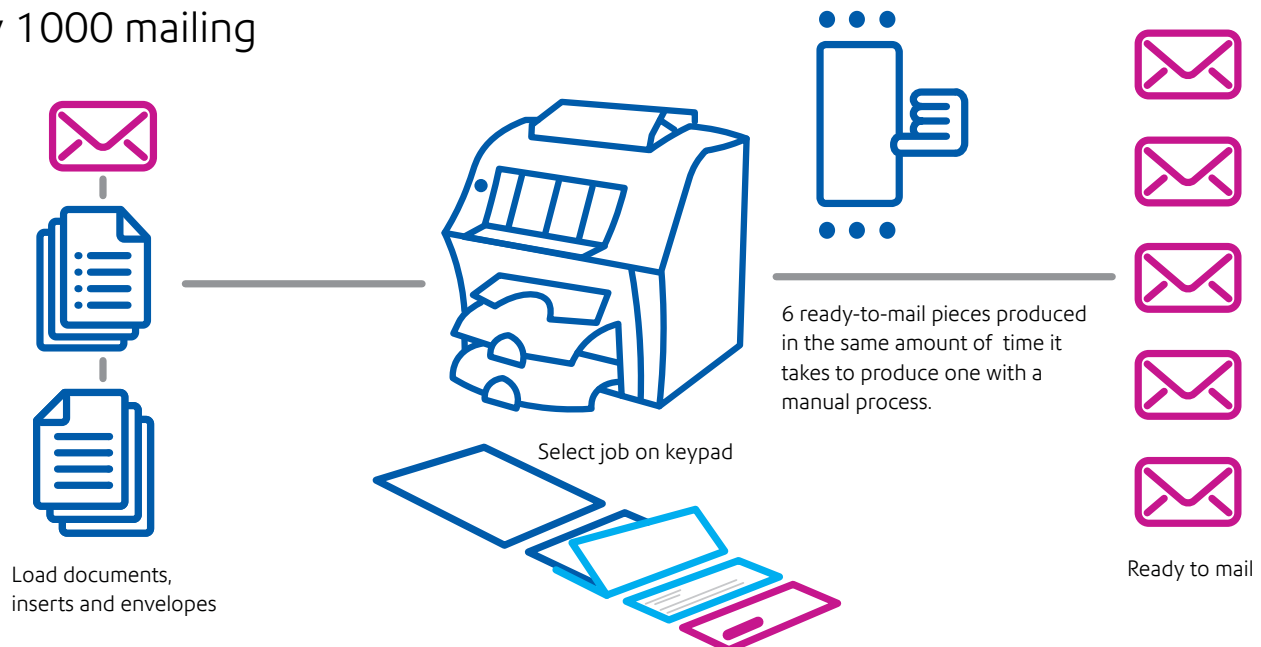
## Notable attributes:

- Insert/fold setting
  - Programmable for fold/insert or fold-only modes
- Double document detection
- Resettable mail piece counter
- Selectable seal or no seal modes

## Traditional mailing



## Relay 1000 mailing



## Specifications

Throughput	900 per hour, up to 15 pieces per minute
Monthly capacity	4,000
Max number of feeders	3 (2 sheet and 1 insert)
Fold options	C, Double

## Sheet feeder

Capacity	80 sheets
Paper sizes	Letter 8 ½" x 11" or Legal 8 ½" x 14"
Paper weights	Minimum 20 lb, maximum 24 lb

## Insert feeder

Capacity	60
Sizes	Length: 5" minimum to 8 7/8" maximum Height: 3 3/8" minimum to 4 ½" maximum
Material weight	20 to 53 lbs

## Convenience feeder

Daily mail/manual/convenience feeder	Up to 3 sheets stapled or unstapled
--------------------------------------	-------------------------------------

## Envelope feeder

Capacity	60 envelopes
Sizes	#10 (4 ½" Height x 9 ½" Length)
Envelope flap	Flap Length: 1.¼" minimum Parallel Flap: 1 13/16" maximum Executive Flap: 2 ¼" maximum
Envelope weights	Minimum 18 lb, maximum 24 lb

## Physical dimensions

Width	17 3/8"
Depth	20 3/4"
Height	14 3/8"
Height with optional 2nd sheet feeder	17 3/8"
Weight	38 lb
Electrical	North America: 110 VAC, 60 Hz UL approved

Relay™ 1000 inserter  
precisely folds, inserts  
and seals up to  
900 pieces per hour.







**Canada**

1-30 Pedigree Court  
Brampton, ON L6T 5T8

For more information,  
visit us online: [pitneybowes.com/ca/relayinserters](https://pitneybowes.com/ca/relayinserters)