



**Shipping**

Shipping Software & Systems

**PitneyAnalytics™**

# Make smarter, data-driven decisions with PitneyAnalytics™.

Gain greater visibility across your shipping, mailing and receiving operations by eliminating data silos.

PitneyAnalytics helps you break down data silos, so you know what's happening in near real-time. As part of the Shipping 360™ platform, it provides complete visibility to data coming from single or multiple Pitney Bowes solutions, including PitneyShip®, PitneyTrack™, ParcelPoint™ Smart Lockers, SendPro® and other Pitney Bowes mailing solutions.

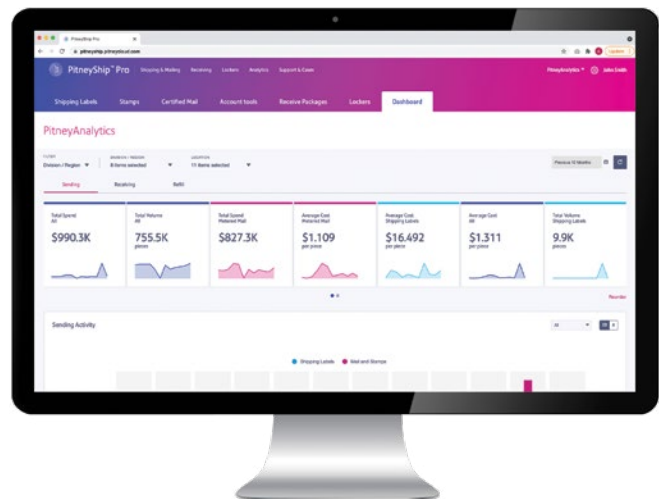
**Save time by consolidating data sources.**

Managing a large enterprise with multiple locations and sending devices makes it difficult to track and analyze data. PitneyAnalytics lets you quickly access critical insights by consolidating data from all these sources. With it, you can:

- Consolidate and standardize shipping, mailing and receiving data from different sources across all locations
- Quickly view near real-time expense data across your entire organization in one place
- Aggregate shipping spend by carrier and service class for holistic views into shipping activity

**Save money and boost efficiency with recommendations and reports.**

PitneyAnalytics helps easily identify areas to save money and increase efficiency. There's also user and location-based reporting to pinpoint potential "hotspots."



For more information, visit us online: [pitneybowes.com/ca/en/pitney-analytics](https://pitneybowes.com/ca/en/pitney-analytics)

---

# Get the company-wide view of sending and receiving you need to increase savings, efficiency and productivity.

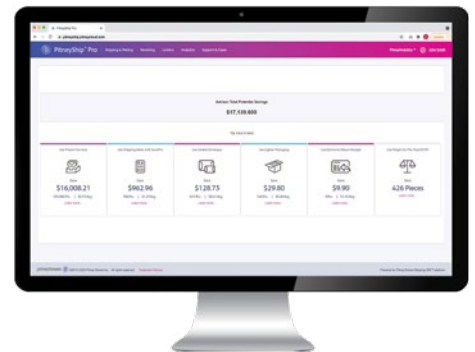
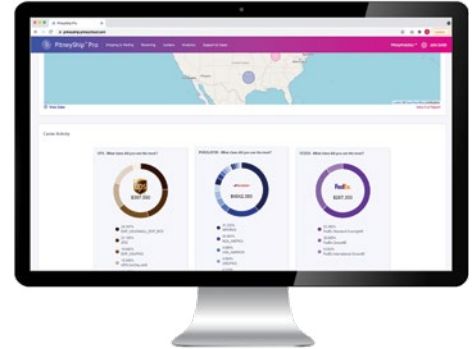
Quickly access the insights you need with these features:

**Actionable Dashboard**—Identify spending patterns to make smarter shipping, mailing and receiving decisions more quickly. View data in one place and get one-click visual access to location and carrier data.

**Robust Reporting & Visualizations**—Make smarter spending decisions with comprehensive reporting and visualizations. Easily spot unwanted spending patterns and quickly correct them. Also discover opportunities for equipment optimization with the ability to drill down, using a multi-layered approach.

**Cost Account Management**—Configure all your cost accounts in one place to ensure you get consistent chargeback reports across your Pitney Bowes shipping and mailing solutions. Once configured, your data is seamlessly synchronized between your Shipping 360™ and SendPro mailing solutions\*. You can also import new cost accounts from a secure FTP server.

**Locker Utilization Insights**—If your organization has ParcelPoint™ Smart Lockers, you can access locker utilization data, insights and trends with PitneyAnalytics.



---

## To discuss how PitneyAnalytics can benefit your business, contact your Pitney Bowes sales representative today.

---

\*Please note: If you use ALM to manage cost accounts for your mailing machine, you won't be able to modify cost accounts on the machine.



Canada  
1-30 Pedigree Court  
Brampton, ON L6T 5T8